

# CARMEN WONG

NUKE COMPOSITOR

vfxartist@wongcarmen.com

www.wongcarmen.com

## DEMO REEL BREAKDOWN 2024



**TV Mini Series Project**  
I Am Groot (Season 1)

**Responsible for**  
Integration of CG environment/character and FX elements  
and color grading.



**Film Project**  
Doctor Strange in the Multiverse of Madness

**Responsible for**  
CG building/environment set extension, 2D smoke, DMP  
and FX integration.



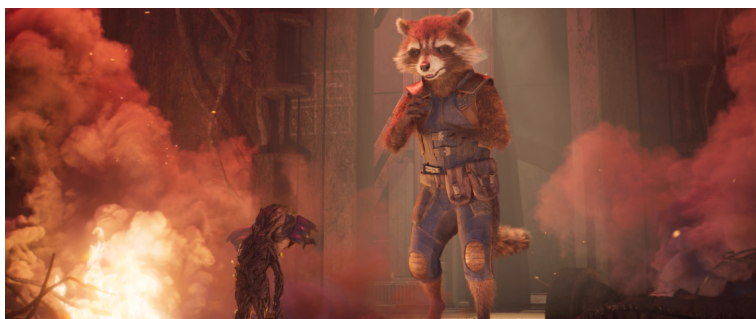
**Film Project**  
Creed II

**Responsible for**  
Green screen key, integrated CG crowd and background  
CG set.



**Film Project**  
Spider-Man: No Way Home

**Responsible for**  
Integration of CG environment/character, sand FX, deep  
compositing.



**TV Mini Series Project**  
I Am Groot (Season 1)

**Responsible for**  
Integration of CG environment/character and FX elements  
and color grading.

# CARMEN WONG *NUKE COMPOSITOR*

vfxartist@wongcarmen.com

www.wongcarmen.com

## DEMO REEL BREAKDOWN 2024



**TV Mini Series Project**  
I Am Groot (Season 1)

**Responsible for**  
Integration of CG environment/character and FX elements  
and color grading.



**Film Project:** King Richard

**Responsible for:** CG crowd, green screen keying 2D crowd  
members and 3D projecting them into court floor rows  
and the first few rows of stadium seats.



**Film Project**  
Little Women

**Responsible for**  
CG ice pond and DMP snowbanks.



**Film Project**  
Spider-Man: No Way Home

**Responsible for**  
Full CG set, character, FX, interactive light, and.



**TV Mini Series Project**  
Hawkeye

**Responsible for**  
Added in CG background set extension, painted out un-  
wanted set props and added CG conduit.



# CARMEN WONG NUKE COMPOSITOR

vfxartist@wongcarmen.com

www.wongcarmen.com

## DEMO REEL BREAKDOWN 2024

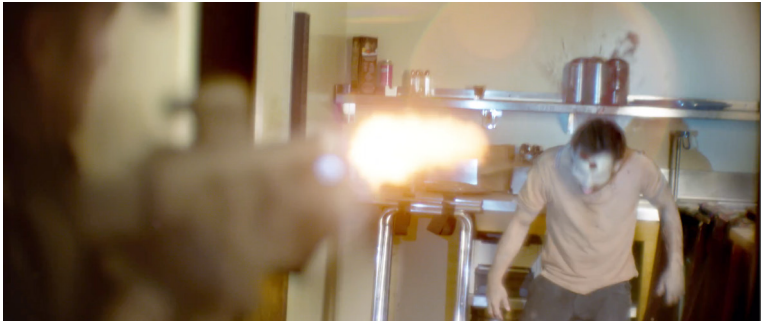


### Film Project

Doctor Strange in the Miltiverse of Madness

### Responsible for

Green screen key, added 2D smoke, integration of full CG background and FX elements.



### Film Project

Army of the Dead

### Responsible for

Muzzle flash, 2D blood hits, tracking and lens flare.



### Film Project

Doctor Strange in the Miltiverse of Madness

### Responsible for

Integration of CG set/environment, DMP 2D smoke and tentacle creature.



### Film Project

Daddy's Home 2

### Responsible for

Monitor replacements, rotoing and keying foreground characters. .



### Film Project

King Richard

### Responsible for

Individually keyed green screen people and 3D projected them into stadium seats.

# CARMEN WONG NUKE COMPOSITOR

vfxartist@wongcarmen.com

www.wongcarmen.com

## DEMO REEL BREAKDOWN 2024



**Film Project**  
Army of the Dead

**Responsible for**  
2D Blood hits, added wound, muzzle flash, and interactive lighting.



**TV Mini Series Project**  
I Am Groot (Season 1)

**Responsible for**  
Integration of CG environment/character and FX elements and color grading.



**Film Project**  
Mile 22

**Responsible for**  
Tracked in bullet wall hits, 2D blood, muzzle flash and wound hit.



**Film Project**  
Bad Boys for Life

**Responsible for**  
Green screen key, stitched driving plates and removed crew in sunglass reflection.



**TV Mini Series Project**  
I Am Groot (Season 1)

**Responsible for**  
Integration of CG environment/character and FX elements and color grading.



# CARMEN WONG NUKE COMPOSITOR

vfxartist@wongcarmen.com

www.wongcarmen.com

## DEMO REEL BREAKDOWN 2024



### Film Project

Creed II

### Responsible for

Green screen key, CG crowd and set integration.



### Film Project

Black Panther Wakanda Forever

### Responsible for

3D projecting monitor inserts and reflections, rotoing and keying FG characters, stitching CCTV monitor graphics, and color balancing.



### Film Project

Spider-Man: No Way Home

### Responsible for

Full CG set, character, FX, interactive light, and added camera shake.

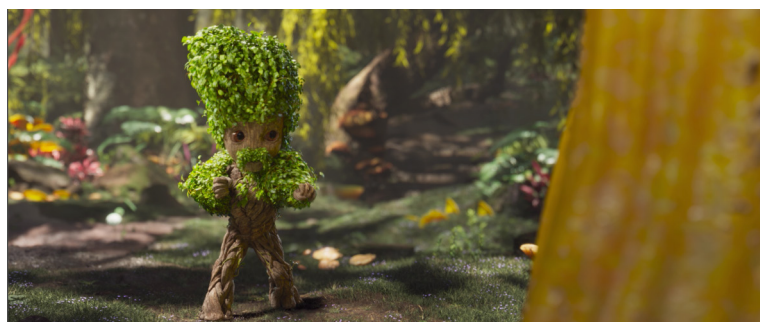


### Film Project

Patriots Day

### Responsible for

Removed camera man in front of actor and stitched together a crowd.



### TV Mini Series Project

I Am Groot (Season 1)

### Responsible for

Integration of CG environment/character and FX elements and color grading.

# CARMEN WONG NUKE COMPOSITOR

vfxartist@wongcarmen.com

www.wongcarmen.com

## DEMO REEL BREAKDOWN 2024



**TV Mini Series Project**  
I Am Groot (Season 1)

**Responsible for**  
Integration of CG environment/character and FX elements  
and color grading.



**Film Project**  
Daddy's Home 2

**Responsible for**  
CG tree integration.



**Film Project**  
Army of the Dead

**Responsible for**  
2D blood hit and splatter, muzzle flash, lens flare, CG bullet  
and tracking.



**Film Project**  
The Spy Who Dumped Me

**Responsible for**  
DMP blood integration and retime artifact clean-up.



**Film Project**  
King Richard

**Responsible for**  
Individually keyed green screen people and 3D projected  
them into seats.



# CARMEN WONG NUKE COMPOSITOR

vfxartist@wongcarmen.com

www.wongcarmen.com

## DEMO REEL BREAKDOWN 2024



### Film Project

Little Women

### Responsible for

CG ice pond integration, reflections, color balancing and DMP snowbanks.



### TV Mini Series Project

I Am Groot (Season 1)

### Responsible for

Integration of CG environment/character and FX elements  
DMP background and color grading.



### TV Mini Series Project

I Am Groot (Season 1)

### Responsible for

Integration of CG environment/character and FX elements  
DMP background and color grading.